



# GENIE GTH-1056

## Telehandler (Manipulador Telescópico)

- Capacidad de carga: **10,000 Lbs.**
- Altura de trabajo: **17.00 Mts.**

Model	GTH <sup>™</sup> -1056	
Measurements	US	Metric
Maximum lift height	56 ft 10 in	17.32 m
Maximum forward reach	42 ft	12.80 m
<b>A</b> Height, stowed	8 ft 6 in	2.59 m
<b>B</b> Length, stowed (without forks)	22 ft	6.71 m
Width	8 ft 6 in	2.59 m
<b>C</b> Wheelbase	10 ft 8 in	3.25 m
<b>D</b> Ground clearance, center	1 ft 10 in	0.56 m
<b>E</b> Ground clearance, axle	1 ft 6 in	0.46 m
Fork cross section	2.25 x 4 in	57 x 101 mm





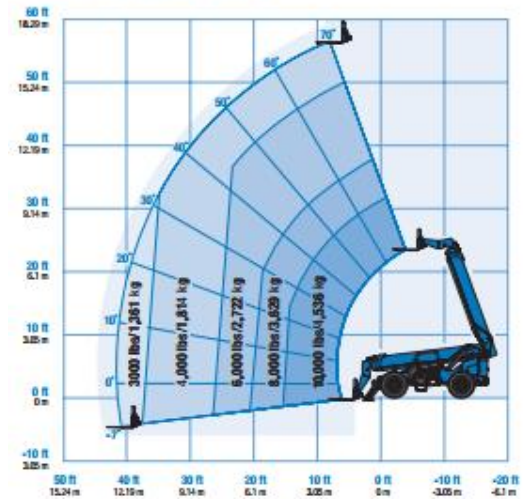
## Productivity

Maximum lift capacity	10,000 lbs	4,536 kg
Lift capacity at maximum height	4,000 lbs	1,814 kg
Lift capacity at maximum reach	3,000 lbs	1,361 kg
Raise/Lower boom	13.5/12 sec	
Extend/Retract	16/15 sec	
Frame leveling	10° side to side	
Drive speed	see engine manufacturer information	
Draw bar pull	28,800 lbs	13,063 kg
Turning radius, outside (4WS)	13 ft 3 in	4.04 m
Auxiliary hydraulic flow	2-15 gpm	7.6-56.8 lpm
Auxiliary hydraulic pressure	3,200 psi	220 bar
Tires, standard size	14 x 24 in, 12 ply	

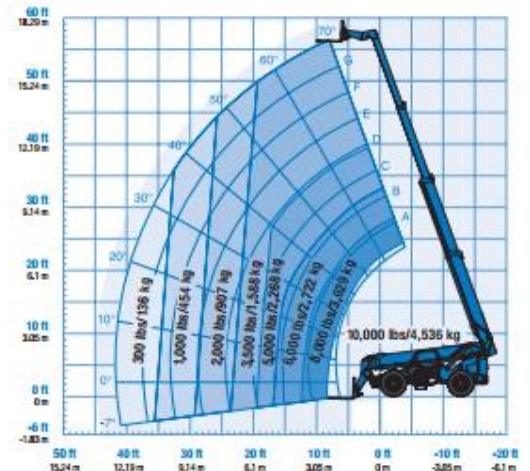
## Power

Power source	Deutz TCD 3.6 L Tier 4i 121 HP (90.23 kW)*	
	Perkins 1204E Tier 4i 124 HP (92.47 kW)	
	Perkins 1104E Tier 3 124 HP (92.47 kW)**	
Electrical system	System voltage 12 volt	
	Alternator 95 amp	
	Battery 1000 CCA at 0°F (-18°C)	
Hydraulic tank capacity	44 gal	166.6 L
Hydraulic system capacity (w/tank)	55 gal	208.2 L
Fuel tank capacity	35 gal	132.5 L

Load Chart GTH<sup>™</sup>-1056\*\*\*\*



With stabilizers down



With stabilizers up